

Environmental Notification Form

J. MICHAEL RUANE JUDICIAL CENTER SALEM TRIAL COURTS



Submitted by:
Division of Capital Asset
Management
One Ashburton Place
Boston, MA 02108

Submitted To:
Executive Office of Environmental Affairs
MEPA Office
100 Cambridge St., Suite 900
Boston, MA 02114

January 2, 2007

Epsilon
ASSOCIATES, INC.

ENGINEERS  ENVIRONMENTAL CONSULTANTS

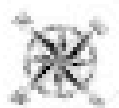


Figure 2
Site Photo
DCAM
Salem, Massachusetts

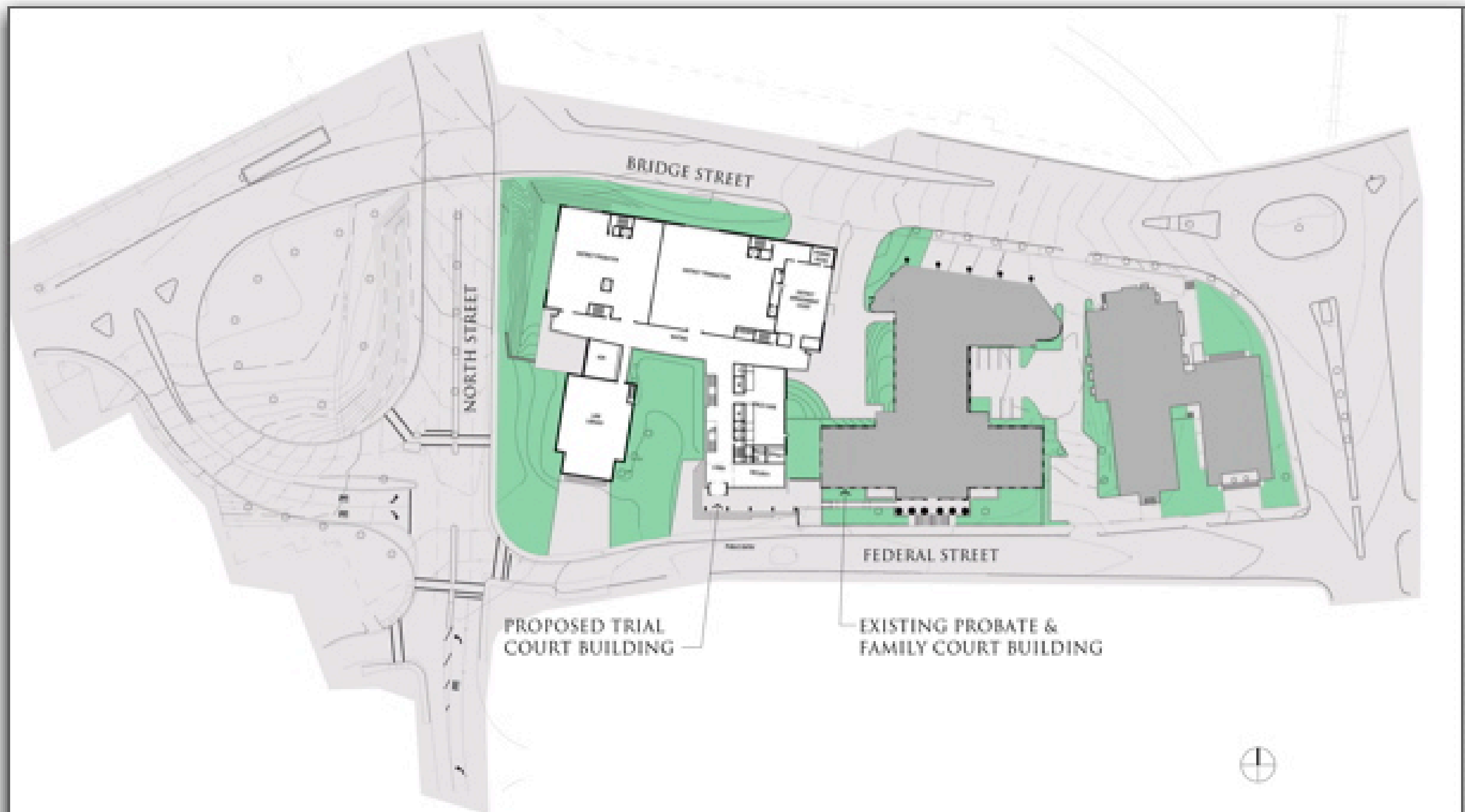
Epsilon
ASSOCIATES INC.



GOODY CLANCY

SALEM NEW TRIAL COURT EXISTING SITE

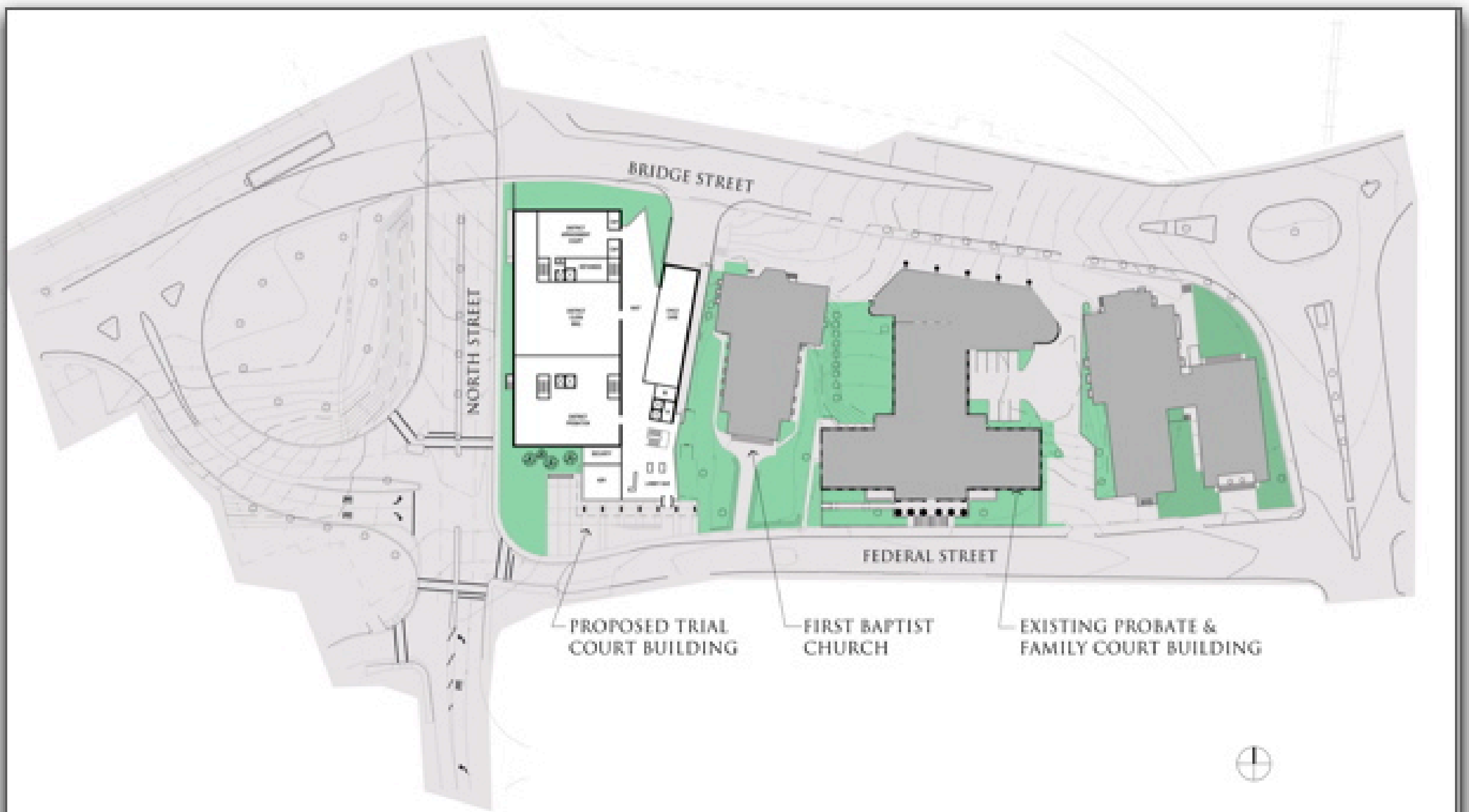
OCTOBER 4, 2006



GOODY CLANCY

SALEM NEW TRIAL COURT PLAN A

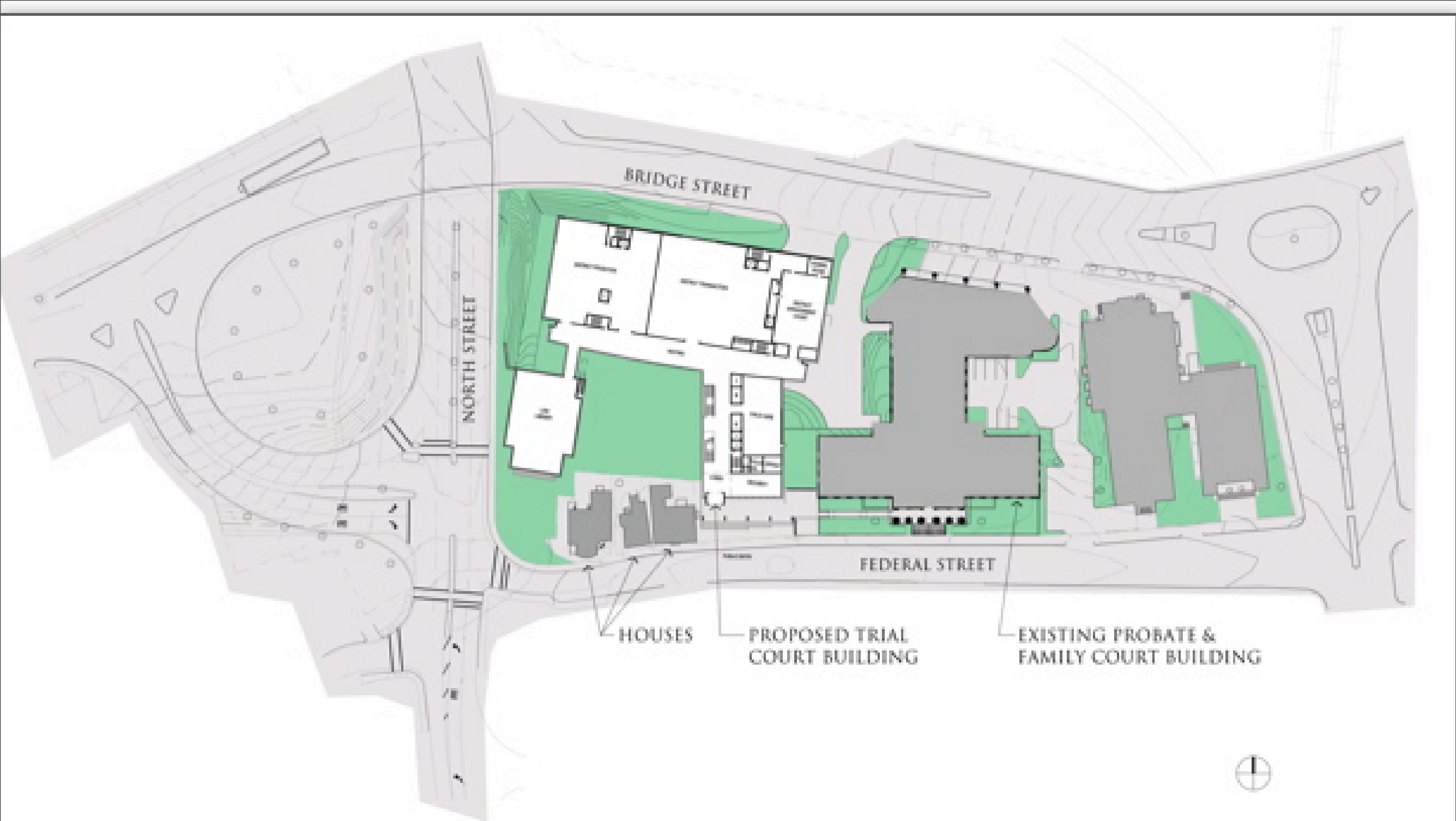
OCTOBER 4, 2006



GOODY CLANCY

SALEM NEW TRIAL COURT PLAN B

OCTOBER 4, 2006



GOODY CLANCY

SALEM NEW TRIAL COURT PLAN C

OCTOBER 4, 2006